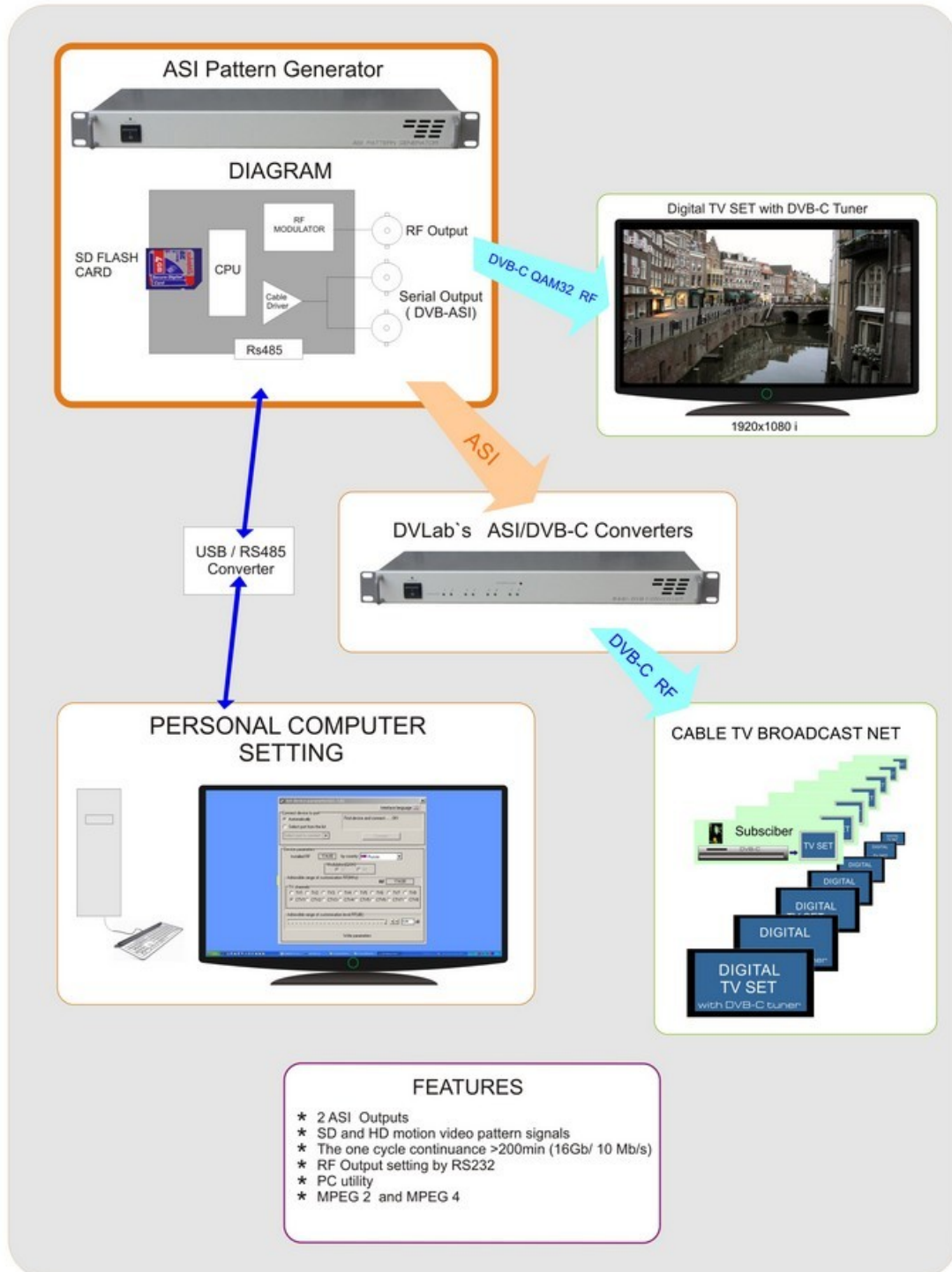
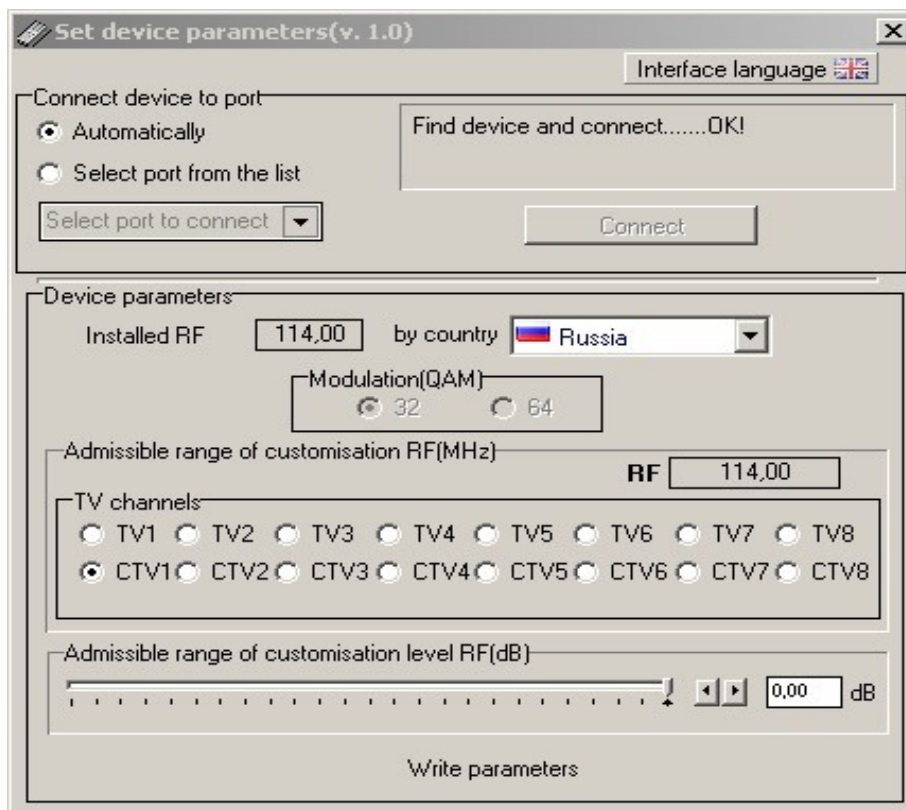


DVLab - TELEVIEW & RadioFar presented  
**ASI Pattern Generator**



## Description

1. Connect the generator with USB/RS485 converter to the PC.
2. Install the converter driver USB/RS485. (supplied by us)
3. Connect generator RF output to the cable receiver DVB-C or to the TV-set with built-in DVB-C receiver.
4. Turn the generator power on.
5. Run AsiPL\_SettingsRF.exe software (supplied by us).
6. Install the required port and press "Connect" button



7. Select 1 of the 16 channels and press "write parameters" button.
8. Insert Flash card with the content (supplied by us) and tune the receiver to the selected channel.